

# Measure With Handheld Raman What You Couldn't Measure Before!

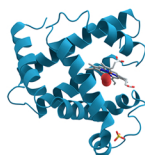


Where **APP** is an application with an *optimized* system for a variety of fields...

**RamTest - ART**  
for art & archeology



**RamTest - BIO**  
for biologics



**RamTest - CHE**  
for chemistry



**RamTest - CSI**  
for police & crime scenes



**RamTest - GEO**  
for geology & gems



With excitation of 532 nm the...

- **SENSITIVITY IS HIGHER (~5-10x)**  
*identify components in water to 0.1%*
- **FULL RANGE 100-4000 cm<sup>-1</sup>**
- **MEASUREMENTS ARE FASTER**
- **FLUORESCENCE IS AUTOMATICALLY REMOVED**  
*and spectra baseline corrected*

Add your own spectra • Measure through packages/containers • True portability

